

Improve your on-site production efficiency!



## DNC Data Station

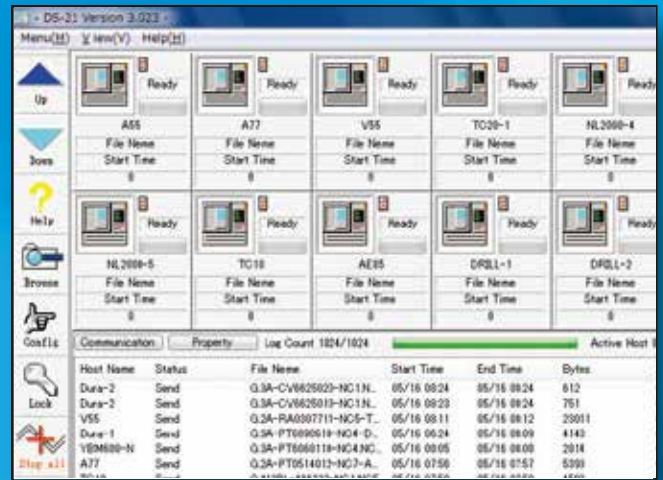
Your manufacturing site can be  
"More convenient!" and  
"More comfortable!"

# DS-21

## Consolidate NC data

### Major Functions

- Allows networking with machine tools regardless of the manufacturer.
- Achieve batch control of documentation, e.g. drawings, written directives, etc.
- Editing and simulation of NC data available.
- Easily processes large volumes of NC data using DNC operation.
- Able to receive Email notification at critical instances, e.g. at tool exchange or when a process finishes.
- Keeps a history of all data transfers.



## Solve all these worries at once!

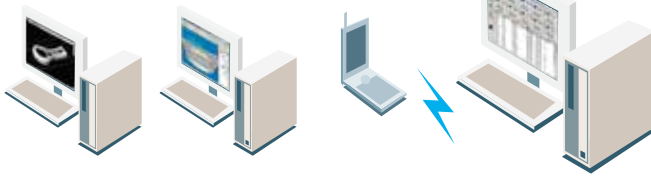
- Using floppy disk or memory device (SD card, USB drive) requires extra effort and makes it difficult to unify NC data.
- Control of latest data and back-up data adversely affects production efficiency.
- Stress and anxiety over data loss and/or security.

**DS-21** is the best tool to solve these on-site problems

Even if a piece of equipment lacks a LAN port, shifting between RS232 and LAN is available using conversion adapter (LR714X), so that all NC machine tools can operate in the same manner.

## ■DS-21 system configuration

CAD/CAM(various manufacturers)



DS-21 Web

### ■Compatible OS

Windows XP(SP3) or later

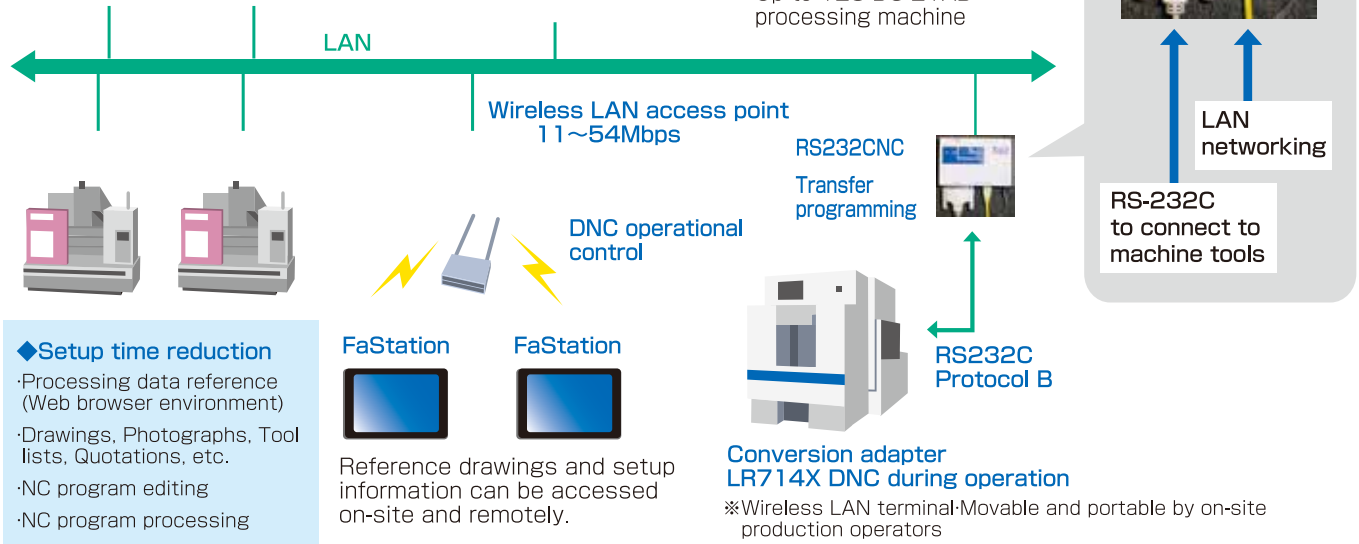
### ■Minimum hard drive space required

1GB

### ■Maximum connections

Up to 6DS-21 Jr processing machine

Up to 128 DS-21AD processing machine



### ◆Setup time reduction

- Processing data reference (Web browser environment)
- Drawings, Photographs, Tool lists, Quotations, etc.
- NC program editing
- NC program processing

FaStation



FaStation



Reference drawings and setup information can be accessed on-site and remotely.

Conversion adapter LR714X DNC during operation

※Wireless LAN terminal-Movable and portable by on-site production operators

## ■Benefits

- Significant setup time reduction
- Significantly reduces the time it take to replace the NC program, DNC operation is also available of course.
- Allows administrators to have total control over all information related to pre-production setup such as
- Complete security, coordinating other makers` CAD/CAM in a Windows® environment.
- Increase operation and sales rates by reducing pre-production time.
- From the late network mounted processing machines to former model processing machines, unified data control is available regardless of equipment type.

## ■Special features

- Simultaneous Speed Communication Function (DNC) up to 128 machines
- Transmit identical files concurrently (multi-address transmission)
- Remote communication mode (Remote controlled)
- Scheduled operation
- Subprogram deployment and transmission function
- Image data coordination (Drawings or quotations, etc.)
- Network coordination (CAD/CAM)
- NC data drawing and editing function
- Automatic Email notification (DNC operation monitoring)
- Filing control (data and tool research)

 **Kyoritsu System Machine LTD.**

SALES DIVISION

〒259-1114

KYORITSU DAICHI BUILDING,

1195-1, TAKAMORI, ISEHARA-SHI, KANAGAWA

TEL:+81-463-91-7298 FAX:+81-463-94-4408

<http://www.kyoritsu-s.co.jp/ds/>



【SALES AGENT】